

-905-?1 x - 8 1	19?1 x x8 . 1=	-905-?1 x x8 . 1=
		2



GCE AS/A level

1321/01

PHYSICS

PH1: MOTION ENERGY AND CHARGE

A.M. WEDNESDAY, 12 January 2011

1½ hours

9 - 005x9 x 4x1C 8 9-?x9 x-x1= Dxx B577=x51 -
/-7x7 x=-90 - 2 --x2

x x . 7/6 96 x=. 7/6 . -7x9?x19

) =x1 Dxx=9-8 1 /19?1 9x8 . 1=-90 /-905-?1 9x8 . 1=9 ?41
xx- /1x-?41 ?xx x2 ?4x- 31

9xB1= xxx1x9x

) =x1 Dxx=-9xB1-x9 ?41 xx- /1xx-xA510 9 ?4x. xx67?

-0 6 x xxx08 31x -xx		
3x12x	6x 3x 0x	0x 5 0xx
1.	1	
.		
.	1	
.		
.		
.	1	
-2 x		

x41 x?-79x8 . 1=x28 -6x-A 57. 71 x=?4x-x1=x 0

x41 9x8 . 1=x28 -6x x35A19 9 . =/61x-? ?41 190 x2 1-/4 xx1x9 x=x- ? xx1x9

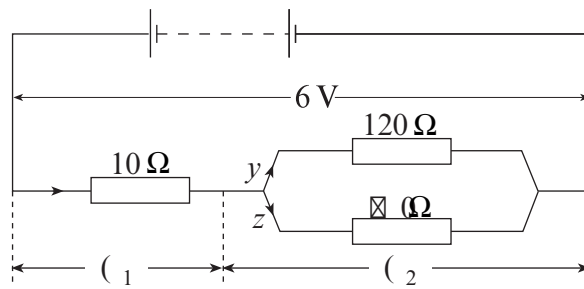
*xx -x =18 9010 x2 ?41 91/1xxDx=3xx0 937x4 -90 x=01=7x=x19?-?x9 9 Dxx=-9xB1-x

*xx -x =18 9010 x 4xB -7 Bx=693 =10x x 35A19 x=/x=1/? Bx=693 1A19 B419 ?41 29-7
-9xB1=35A19 x9/x=1/?

1. (5) $\frac{1}{R_{eq}} = \frac{1}{10} + \frac{1}{120} + \frac{1}{80}$ 9 -
8

(5) $\frac{1}{R_{eq}} = \frac{1}{10} + \frac{1}{120} + \frac{1}{80}$ $\Rightarrow R_{eq} = 6 \Omega$ 8

$\frac{1}{R_{eq}} = \frac{1}{10} + \frac{1}{120} + \frac{1}{80}$ $\Rightarrow R_{eq} = 6 \Omega$



(5) $\frac{1}{R_{eq}} = \frac{1}{10} + \frac{1}{120} + \frac{1}{80}$ $\Rightarrow R_{eq} = 6 \Omega$ 8

(5) $\frac{1}{R_{eq}} = \frac{1}{10} + \frac{1}{120} + \frac{1}{80}$ $\Rightarrow R_{eq} = 6 \Omega$ 8

- 7 8 7 1

(5) $\frac{1}{R_{eq}} = \frac{1}{10} + \frac{1}{120} + \frac{1}{80}$ $\Rightarrow R_{eq} = 6 \Omega$ 8

(5) $\frac{1}{R_{eq}} = \frac{1}{10} + \frac{1}{120} + \frac{1}{80}$ $\Rightarrow R_{eq} = 6 \Omega$ 8

(55) 241 1975 70 521=19/ 1 (1 -90 (2

☒

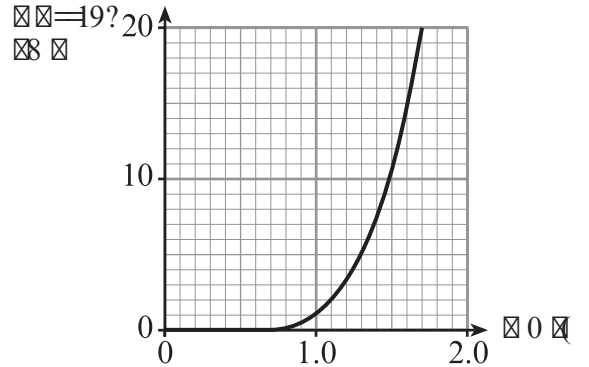
(5A) 241 / 1975 y -90 z

☒

☒

☒ 41 / ☒ = 19? - A 7- 31 / 4- = / ? 1 = 5 5 ☒ 2 - 0 5 0 1 - ☒ - ☒ D ☒ - 7 3 4? 18 5? 9 3 0 5 0 1 (☒) ☒
3 = ☒ 4 ☒ 2 / ☒ = 19? - 3- 9 ☒ ☒ ? 19? 5 7 0 5 2 1 = 19 / 1 ☒ = - 9 ☒ ☒ 4 ☒ B 9

☒ ☒ (5) ☒ - 7 7 7 ? 1 ? 4 1 = 1 0 0 - 9 / 1 ☒ 2 ? 4 1 ☒ ☒
B 4 1 9 ? 4 1 ☒ 0 ☒ 1 ☒ (☒ ☒

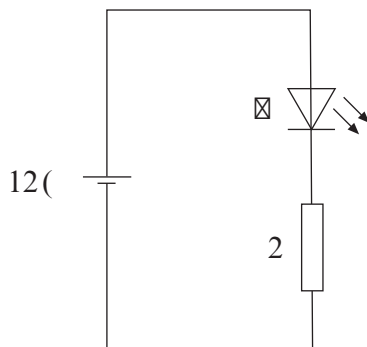


(5) ☒ ☒ 8 19? 9 ? 4 1 = 1 0 0 - 9 / 1 ☒ 2 ? 4 1 ☒ - ? A 7- 3 1 ☒ 1 ☒ B 1 0 (☒
☒ - 7 7 7 ? 9 ☒ - = 1 9 ☒ ? = 1 0 0 5 = 10

☒ ☒ (5) ☒ 7- 9 4 ☒ B ? 4 1 3 = ☒ 4 ☒ 4 ☒ B ☒ ? 4- ? ? 4 1 ☒ 0 ☒ 1 ☒ 9 ☒ ? ☒ 1 D ☒ 4 8 ☒ 7 B ☒ ☒

(5) ☒ - 8 1 ☒ 9 1 ☒ ? 4 1 = 0 1 A 7 1 ☒ ? 4 1 = ? 4- 9 - 0 5 0 1 ☒ B 4 5 4 ☒ 4 8 ☒ 7 B 0 ☒ 1 ☒ 9 ☒ ? - ☒ D ☒

☒ ☒ (☒ ? 4 1 ☒ ☒ / ☒ 9 9 1 / ? 10 - / = ☒ ☒ - ☒ ☒ ☒ D ☒ 2 1 8 2 3 = - ? 1 = ? 4- 9 1 ☒ (? 4 1 9 ? 4 1 7 = 3 1
/ ☒ = 19? ☒ ☒ 0 ☒ / 10 B 5 7 0 1 ☒ ? = D ? ☒ ☒ = ? 4 ☒ = - ☒ 9 ☒ ☒ ☒ ☒ - 7 D 4- A 1 ☒ ☒ ? 1 / ? 5 A 1 = 1 0 0 0 = ☒
9 ☒ 1 = 5 ☒ B 5 4 ? 4 1 8 ☒ 7 8 5 ? ? 4 1 / ☒ = 19? ☒ 4 1 / 5 = ? 9 ☒ 4 ☒ B ☒ ? 4 ☒ ☒ ☒ 10 - ☒ - 9 9 0 5 - ☒ =
☒ = - / - = - 7 = 8 ☒ 4 1 / - = - ? ? 1 = D ☒ ☒ ☒ 7 1 1 2 (- 9 0 ? 4 1 ☒ 4 - ☒ - 9 ☒ 1 = ? 9 3 / ☒ = 19? ☒ 2
1 ☒ 8 ☒ ☒ 1 ? 1 = 8 9 1 ? 4 1 A ☒ 1 2 ☒ 2 ? 4 1 ☒ = ? 1 / ? 5 A 1 = ☒ ☒ ☒ = 9 1 1 0 10 ☒





1321
0100000

☒ ☒ (☒ 1=5A☒35A93 - 7. 1770 05 3= 8 ☒?41 =17?☒9☒4☒ . 1?B119 ?41 /☒=19? 0 ?4=☒☒34 -
8 1?- 7B5☒ ☒2 / =☒☒☒/ ?☒9- 7- =1- -☒?41 0=2? A1☒/ 5D☒ ☒ ☒☒2 ?41 2=1 17/?☒9☒1-/4 ☒2
/4- =31 ☒☒- 90 ?41 9☒8 . 1=☒☒☒2 2=1 17/?☒9☒1=☒9☒ A☒☒8 1☒2 ?41 8 1?- ☒ ☒,
(0 ☒☒ -☒ ☒)☒

☒ ☒ (☒ -7☒7?1 ?41 0=2? A1☒/ 5D☒2 2=1 17/?☒9☒ 9 - /☒☒☒1=B5☒ ☒2 / =☒☒☒ / ?☒9- 7- =1-
1☒ G10^{1☒}8² B419 - /☒=19?☒2 2☒☒ 2☒B☒☒☒/☒☒☒1=☒ 1☒ G10^{2☒}8¹³,☒ ☒,

☒ ☒ (☒ ☒☒?19?5 70221=19/1 ☒ =☒☒5=10 - / =☒☒?41 /☒☒☒1=B5☒ 9 ☒=01=☒=?41 /☒=19? ☒ 2☒B☒
☒41 ☒5E1 ☒2 ?41 /☒=19? 01☒190☒☒9 ?41 B5☒☒☒☒☒☒☒☒☒☒7 9 9 ?1=8 ☒☒2 2=1
17/?☒9☒4☒B ?4☒ =☒☒- 9/1 - =☒☒☒ ☒,

☒

☒☒ (☒41 /☒☒☒1=B51 9 ☒☒(☒☒2 7193?4 2☒☒8 ☒) 419 5? /- =51☒ - /☒=19? ☒2 2☒☒ ☒☒5?
0☒☒☒-?1☒191=3D-? ?41 =?1 ☒2 0☒) ☒☒ - 7☒7?1 5☒ =1☒☒?5A?1☒ ☒,

☒☒ (☒ ☒/☒90 /☒☒☒1=B51 4-☒?41☒-8 1 A☒☒8 1 -☒?41 B51 9 ☒☒ ☒. ☒? ☒☒931=☒
☒☒8 ☒7?1 ?41 ?- . 71 . 1☒B 905-?93 B41?41=?41 ☒☒-9?5D35A19 ☒ ☒ =
☒=?4☒ ☒931=B51☒ ☒,

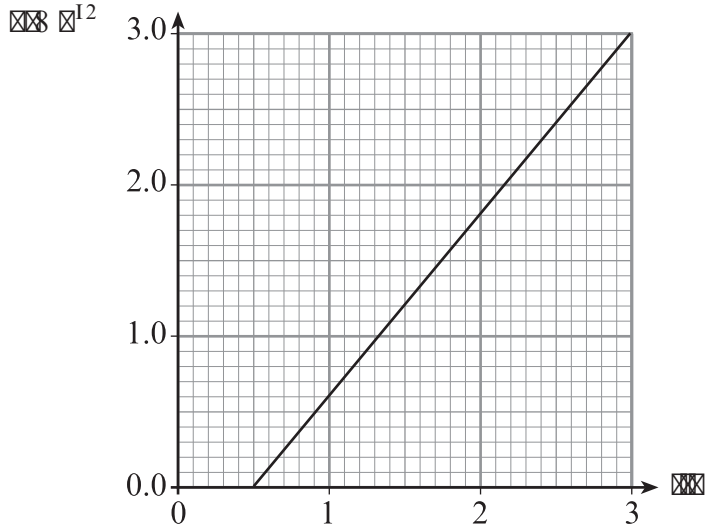
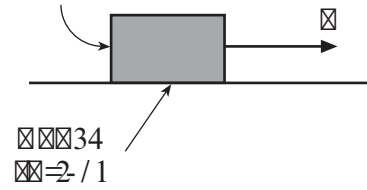
☒ ☒☒☒☒/ ?☒9-7☒ =1-	
☒☒9☒8 . 1=☒2 2=1 17/?☒9☒☒95? A☒☒8 1	
☒ 1☒☒?5A?D	

☒

☒C 8 91=
☒9D

☒ . ☒0D☒2 8 -☒1 ☒7/10 ☒9 - ☒☒34 ☒2/1 -90 - 4☒=☒9?-7☒≠1☒☒☒☒-☒☒7510 ☒ 9 -☒
 ☒4☒B9☒☒ -?-☒3393 -☒☒=☒☒☒☒☒0 ☒ 01?1=8 91 ?41 -//17=?☒9 ☒2 ?41 . ☒0D☒=0.521=19?
 A ☒1☒☒2☒☒41 =☒☒7☒- =☒4☒B9 9 ?41 3=☒4☒

☒☒0D☒2
8 -☒1



☒☒ (5) ☒☒7-9 B4D?41 -//17=?☒9 ☒2 ?41 . ☒0D☒☒ B419 ?41 -☒☒7510 ☒≠1☒☒☒7☒☒?4-9
 0☒☒☒☒ ☒,

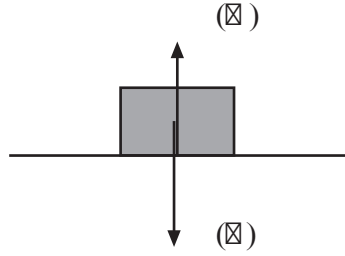
(5) ☒☒1 I☒☒=3=☒4 ☒ 01?1=8 91 ?41 A ☒1☒2 1☒ ☒,

☒

☒C 8 91=
☒9D

☒☒ ((5) - . 17☒≠1☒(☒) - 90 (☒) - ☒☒ - /?93 ☒9 ?41 . ☒0I☒

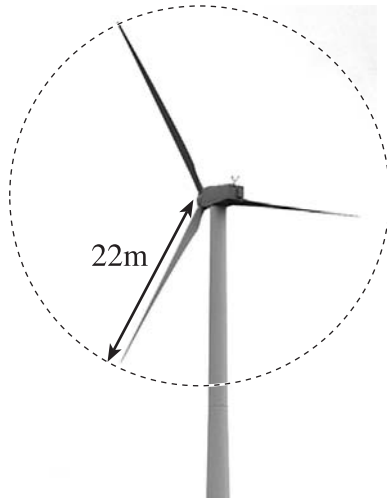
☒,



(5) %?-?1 ?41 ☒ 1B?☒9 ?45=0 7-B =-/?☒9 ☒ ☒≠1 (☒) - 90 ?41 . ☒0D☒☒☒9 B454 5-/?☒
☒,

1321
010000

B90 = 91018910 3191= ?1 17/?= 304- . 701B454 B110 -9 -=- 2 = 0 22 8 41 = 91 =9L9 ?41 B90M ?4-? ?41 -=- B10? . D?41 . 7010 - 7B- 10 - ? =34? - 9370 ?41 B90 051/?90



(5) 41 A 8 1 2 - 5= - 93 ?4= 34 ?41 . 7010 1A1=D01/090 /-9 . 1 /- 707?10 . D /9001=93 - /D901=02 - 5= 9/ 5019? 09 ?41 . 7010%40B ?4-? ?41 A 8 1 2 - 5= - 93 ?4= 34 ?41 . 7010 9 091 01/090 - 00=0C8 - ?1D21000 8³ 0¹ B419 ?41 B90 110 108 0¹ 0,

(5) 19/1/-707?1 ?41 8 - 002 - 5= - 93 ?4034 ?41 . 7010 1A1=D01/090 0, 1900D02 - 5= 102 638¹³ 0,

(55) 41 8 1-9 110 2 ?41 - 5=- 21= 4- - 10 ?4- 34 ?41 . 7 01 11 8 ^I - 7 7 ?1
?41 6 9 1 ? 191= 3 D . D ?41 - 5= 1= / 90 - 8 - 1 ?4- 34 ?41 . 7 01

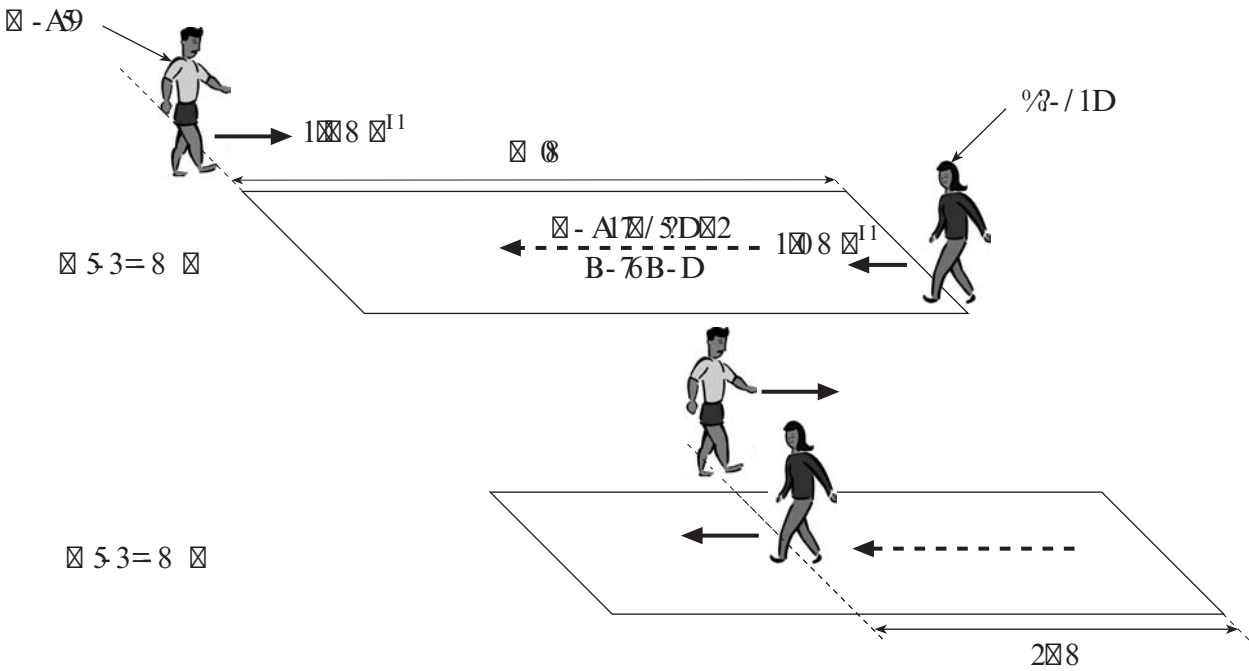
(5A) 8 93 ?4-? 2 ?4 J 191= 3 D 10 ? 3 191=? 17/?= 5 01 ?1= 8 9 1 ?41
9 8 . 1= 2 ? = 9 1 ?4-? B 7 . 1 9 11 0 10 ? = 0 / 1 ?41 8 1 B 1= ? ? ? - - 3 7
1000) / - 7 2 5 = 10 B 1= ? - ? 9

8 8 (8 1291 8 8 8 8 8 8)

8,

8 8 (5) 8- / 1DB- 78 B 84 - A1 7 / 8D 2 1 8 8 11 8 9 8 - 8 8 A 9 3 B- 7B- D- ? - 9 - 5 8 8 - ? - 90 / 8 9 ? 9 8 1 8 8 B- 76 - ? ? 41 8 1 8 - / 1 8 8 41 B- 76B- D 8 8 8 8 8 A 9 3 B 84 - A1 7 / 8D 8 8 - 90 8 ? 41 8 1 0 5 1 / ? 8 9 - 8 8 - / 1 8 8) = 8 1 0 8 B 9 - 9 1 8 8 = 8 8 8 9 8 8 = 8 8 - / 1 8 8 8 8 7 - 9 ? A1 7 / 8D 8 8,

(5) 8 - A 9 B- 76 B 84 - A1 7 / 8D 2 1 8 8 8 11 8 9 ? 41 8 8 8 8 8 8 1 0 5 1 / ? 8 9 8 8 8 - / 1 8 8 8 1 31 ? 8 9 ? 41 B- 76B- D. 8 ? 8 8 8 1- 0 B- 76 8 8 8 - 8 ? = 53 ? 7 9 1 . 1 8 8 0 1 ? 41 B- 76B- D- 8 8 4 8 B 9 8 0 5 3 = 8 8 8 8 ? ? 41 8 8 8 - 9 ? 8 8 - / 1 D 8 1 8 8 8 8 9 8 ? 41 B- 76B- D 8 - A 9 8 8 8 8 8 8 9 10 - ? ? 41 2 = 190 8 8 0 8 - B- D 8



8 ? 8 8 1 ? 8 1 J 8 7 - ? 1 = (0 5 3 = 8 8) 8 8 - / 1 D 4 - 8 ? = A1 7 1 0 2 8 8 2 8 8 41 = 8 - ? 8 8 8 ? B 4 1 9 8 41 8 - 8 8 1 8 8 - A 9 B 4 8 / 8 9 ? 9 8 1 8 8 B- 76 8 8 ? 41 8 8 8 8 8 8 1 0 5 1 / ? 8 9 8 8 4 8 B ? 4 - ? J 8 8 8 8 8 8 1 / 8 9 0 8 8 8,

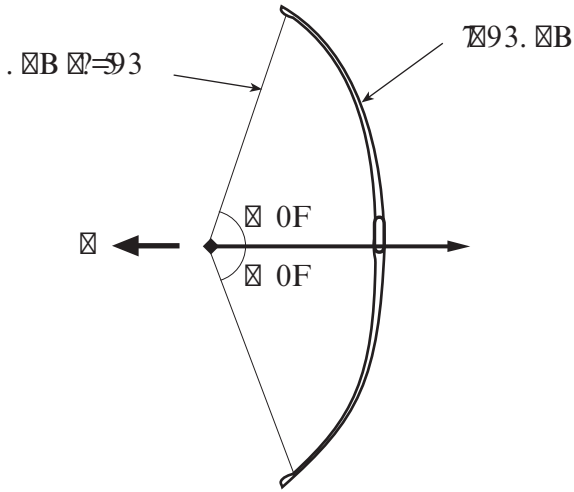
(55) 19/1 =41=B / - 77 ?1 ?41 A / SDB 2 ?41 B- 7B- I

,

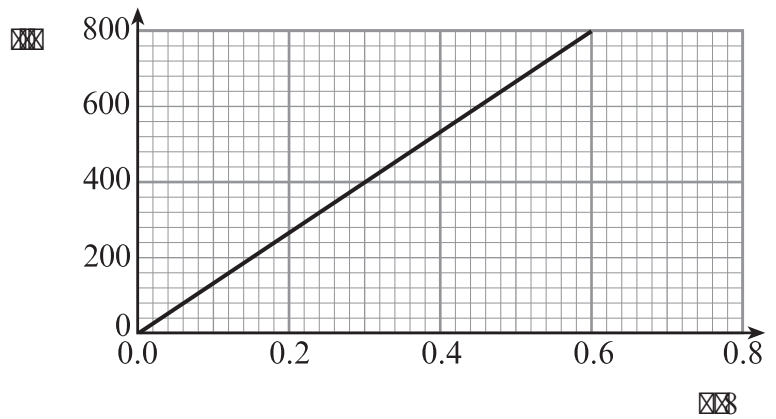
(5A) - 77 ?1 ?41 A / SDB 4 B454 - A9 - 90 % - / 1D- - / 4 1- / 4 41-

,

(41 8 10 51 A 7 93. B B- - 01 A - ? 9 3 7 D 1 2 2 1 / ? 5 A 1 B 1 - 9 9 8 8 5 3 4 - ? - 4 - 9 ? - 7 1 2 0 0 9 1 1 0 1 0 ? 0 = B . - / 6 ? 4 1 . B - 9 3 4 B 4 - ? 4 1 ? 1 9 9 3 9 ? 4 1 - 9 3 - - C 8 - ? 1 7 1 1 0 0)

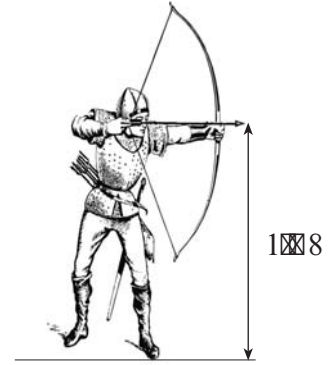


(5) 41 3 = 4 4 B ? 4 1 A - 5 ? 9 2 B 5 4 2 = ? 4 1 9 3. B B 4 1 = 4 4 1 0 - 9 / 1 ? 4 1 / 1 9 ? = 1 2 ? 4 1 - 9 3 7 1 0 . - / 6 - 7 7 ? 1 ? 4 1 1 9 1 - 3 D = 1 0 9 ? 4 1 . B B 4 1 9 ? 4 1 ? 1 9 9 9 9 ? 4 1 - 9 3 1 1 0 0)



(5) 19 / 10 4 B 4 - ? 4 1 1 1 0 2 ? 4 1 - = B - 4 7 - A ? 4 1 . B - . ? 1 0 0 8 1 - 6 1 ? 4 1 8 - 2 ? 4 1 - = B ? . 1 0 G 1 0 ¹³ 6 3)

(41 - =B 7- 10 4 =9?- 7D-? 4 110 2=8 1 8
 - . A1 ?41 3=90 - 4B9 41 - =B / 9?9 1 5 - ?4
 9?5 7 18 . 10 5 1 2 9 ?41 3=90 - 4 =9?- 70 9/1
 2=8 ?41 9? 2 =7- 1
 / - 7 7 ?1



(5) ?41 ?8 1 ?- 619 =?41 - =B ? =- /4 ?41 3=90 8,

.....

.....

.....

(55) ?41 4 =9?- 70 9/1

,

(55) ?41

2 ?41 - =B B419 5 4 5 ?41 3=90

,

10

C 8 91=
9D

10

C 8 91=
97D